

# STARTEX INDUSTRY

STARTEX INDUSTRY

CORPORATE PROFILE

ADDRESS: PLOT F/267 S.I.T.E. KARACHI, PAKISTAN

TEL: 0092-213-2562902, 0092-213-2570595

E-MAIL: [info@startexindustry.com](mailto:info@startexindustry.com) | [marketing@startexindustry.com](mailto:marketing@startexindustry.com)

WEB: [www.startexindustry.com](http://www.startexindustry.com)



## Contents

ABOUT US .....	2
OUR MISSION: .....	3
OUR VISION: .....	3
OUR TEAM: .....	4
OUR PRODUCTS:.....	5
OUR CUSTOMERS: .....	7
OUR CAPACITY: .....	8
STITCHING MACHINERY:.....	9
KNITTING MACHINERY : .....	9
OUR QUALITY STANDARDS:.....	10
WORK ETHICS:.....	11
CERTIFICATIONS: .....	13
CONTACT DETAILS: .....	14
CUSTOMER REMARKS: .....	15



## ABOUT US

Evolving from the three basic human needs of food, shelter and clothing, the global textile arena has transformed into an \$800 billion industry today. Developing countries like Pakistan and India contributed almost 70% to this trade in 2013 alone and the numbers are constantly on the rise, with recent developments and improving situation giving production a major boost.

Startex Industry is a manufacturer of knitted and woven fabrics and manufacturer and exporter of Men's, Ladies and Children knitted garments. Startex Industry is a quality garments manufacturing concern that is making quite a name for itself in the local and international market. Established in 2004, We started the manufacturing of knitted and woven fabrics and in 2011; we stepped into the export of knitted garments and since then have won customer confidence in all our endeavors through our commitment to quality and consumer satisfaction and have expanded our business to USA and European Markets. No matter what comes our way, these are values that we have never compromised upon.

Our production unit has most modern facilities and high-end machinery setup.

We, at Startex believe in moving forward with the time and to keep enriching our capacity with modern techniques and technology. In line with this principle we regularly keep on an eye on international trends and try our best to replicate those practices at all levels.

Our product range varies from 100% cotton to polyester-cotton, fleece, French terry and Lycra included garments etc under the supervision of highly skilled and qualified professionals. Our supervisors and workers are some of the best in the business with years of relevant experience under their belts.

It is an undeniable fact that if a company takes care of its employees, they in turn take care of the customers. Startex, therefore, goes to great lengths to ensure safety and satisfaction of its workers at all levels. Illegal or unethical practices like over-burdening or child labor have no place at our firm. We believe in growing responsibly.



## **OUR MISSION:**

*“Customer satisfaction is the heart of all business. A happy customer is like a chain reaction that gives rise to numerous potential customers. We believe in creating this chain and sustaining it efficiently”*

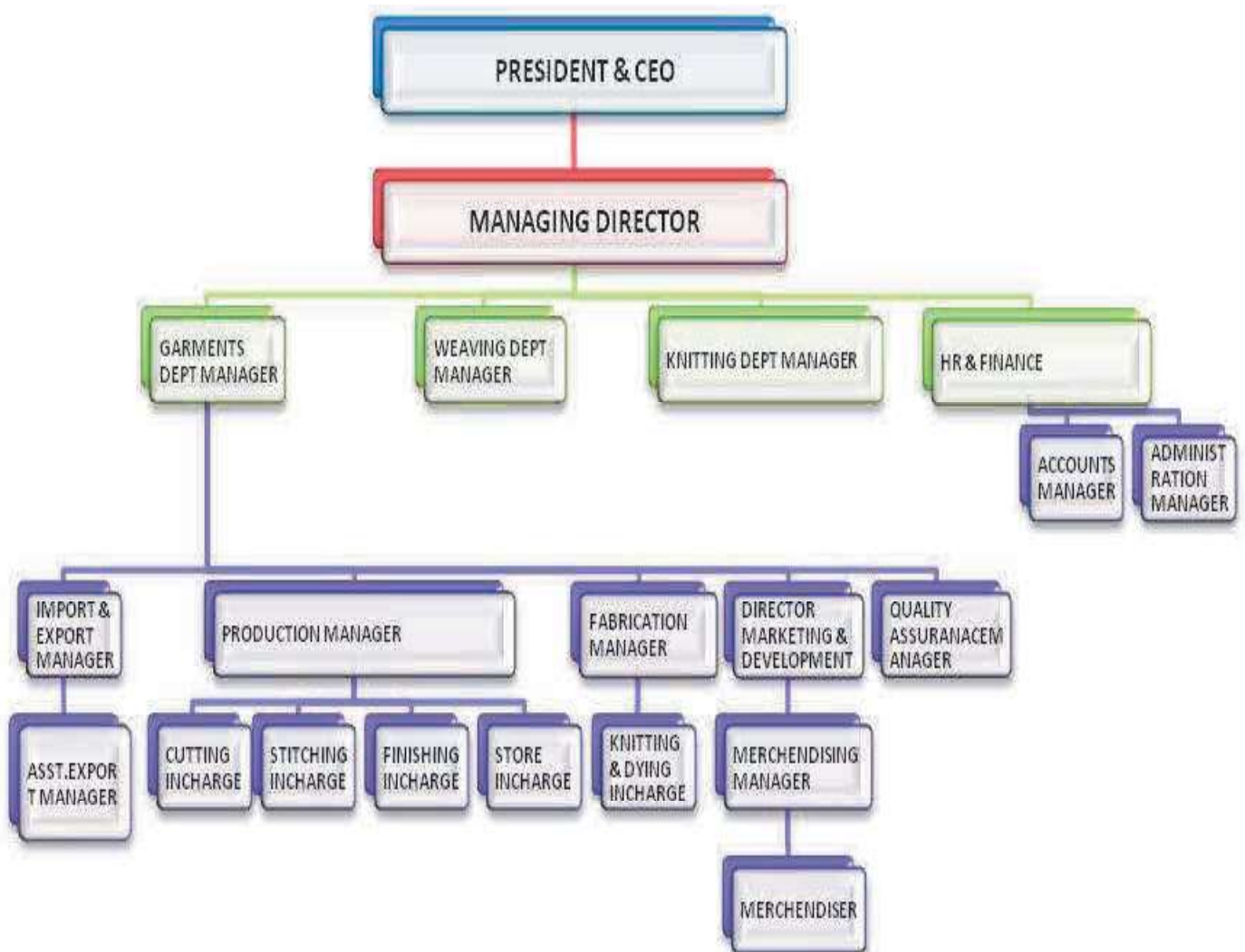
## **OUR VISION:**

*“At Startex Industry there is expertise, strict quality control and continual working capacity. We ensure our buyers that every item is prepared for onward supply and is of the best quality. We are totally committed to perfection”*



## OUR TEAM:

We believe that in order to make any enterprise successful in the long run, it should have a strong team of workers. We have a team of highly specialized and professional people with relevant experience in this field which helps us to fulfill the commitments with our customers. Our management always works towards the betterment of quality. We ensure our buyers that every item is prepared for onward supply and is of best quality. We are totally committed to perfection.







## OUR CAPACITY:

Our monthly capacity of basic garments is 100000-120000 pieces per month for basic garments and 60000-800000 pieces per month for value added garments.

We have our own knitting machines which are installed in the same factory and are equipped to produce *Jersey, Pique, Fleece, Interlock, Popcorn, Herringbone, all 4 cam structured fabrics and Rib*. The fabric in our knitting is thoroughly checked before sending for processing to ensure that A grade quality fabric is transferred to the further operations.





### STITCHING MACHINERY:

S.No	Type of Machine	Qty.	S.No	Type of Machine	Qty.
1	Single Needle Machine	80	8	Cutting Machines	5
2	Over Lock Machine	120	9	Carton Packing Machines	1
3	Flat Lock Machines	65	10	Button Hole Machines	2
4	Over Lock w/ Elastic Drvisor	2	11	Button Machines	2
5	Feedo Machines	2	12	Bar Tack Mahines	1
6	Snap Button Machine	2	13	Gas Bolier(for 8 press)	1
7	Tape Cutter	2	14	Kaaj Machines	4
				<b>TOTAL</b>	<b>292 machines</b>

*Monthly Production Capacity: 380000-400000 Pieces*

*Flow System: Chain System*

### KNITTING MACHINERY :

Machines	Dia	Gauge	Brand	Description
2	26	20,24,28	Fukuhara	Single Jersey with Lycra
3	30	20,21,22,24,28	Fukuhara	Single Jersey with Lycra
1	30	24,28	Pialung	Single Jersey with Lycra
2	34	20,24,28	Pialung	3nd Fleece + Single Jersey with Lycra
1	34	20,24,28	Dragon	3nd Fleece + Single Jersey with Lycra
1	30	15,16,18	Pialung	Interrib with Lycra
1	34	16,18,24	Pialung	Interrib with Lycra



## OUR QUALITY STANDARDS:

In order to meet the international quality standards, we have made our own policies and which are as per the national and international quality norms and we make sure that there is no compromise on quality at any level during and after the production. For this, we apply several quality tests which are conducted at various levels of production, from procurement of the raw materials till the delivery of the finished goods. The quality of our products is also sometimes further tested by international labs such as SGS, Bureau Vitas and Intertek etc.

We have separate Quality Control Department which helps us to maintain the excellent quality standards throughout the production. Our Quality Control supervisors perform checks at each and every level of the manufacturing process such as yarn selection, knitting, processing, cutting , stitching and packing.

Once the fabric is in house after knitting and processing, it is thoroughly checked before cutting to check whether it meets the standards of *shrinkage, color fastness, finished GSM etc.* After cutting, all cut panels are inspected on cutting table to ensure that only the best quality pieces are transferred to the stitching department. During Stitching process, Each and every garment is thoroughly inspected by our experienced line checkers to make sure that the garment are being stitched as per the buyer's requirement. Once the garments are stitched, each and every garment is inspected internally by our quality control team before sending to the packing the packing department.

Our control team also contributes towards improving the efficiency of our production line and hence enables us to make the ship the goods at the required time on a very competitive price.





## **WORK ETHICS:**

- **Forced Labor:** We don't take work from our labor forcefully. All our labor work with full dedication without being pressured or forced by the management through any means.
- **Child Labor:** Startex Industry is strictly against the hiring of child labor and child labor is not hired in the factory for any mind of work.
- **Compensation:** We make sure that we pay the minimum legal wage or the wage prevailing in the industry, whichever is higher. We also make sure to pay the overtime to our employees for the number of extra hours that they have worked.
- **Health & Safety:** We provide all the health and safety measures to our employees during the work to prevent any kind of accidents and injuries which may arise during the course of their work in the factory.
- **Environment:** We take special care of the environment surrounding us and follow all the necessary and applicable country laws and regulations regarding the environment.
- **Harassment or Abuse:** We make sure that every employee of Startex Industry is treated with respect and dignity and does not face any kind of harassment such as physical, psychological, sexual or verbal. We have strict rules against the harassment or abuse and it will not be tolerated at any level.
- **Discipline & Termination:** The employees are expected to work in the discipline and follow all the disciplinary rules. The employees are given a series of warning incase if they don't show up before the final suspension or termination from the company. We do not take forced resignations from our employees.
- **Freedom Movement:** The employees are allowed to leave the company when authorized or in case of any emergency or under special circumstances such as death or illness in the family for which the employee will not be penalized.



- **Discrimination:** The employees are not discriminated on the basis of race, gender, ethnicity etc at the time of hiring, wages, advancements and termination etc. We make sure that the employees are treated fairly and there is no discriminatory biasness.



## CERTIFICATIONS:

- **Worldwide Responsible Accredited Production (WRAP)**
- **ISO 9001-2015**
- **ISO 14001-2015**





## CONTACT DETAILS:

➤ **Marketing Department**

*Email: [marketing@startexindustry.com](mailto:marketing@startexindustry.com)*

➤ **HR Department**

*Email: [careers@startexindustry.com](mailto:careers@startexindustry.com)*

➤ **Accounts & Finance Department**

*Email: [accounts@startexindustry.com](mailto:accounts@startexindustry.com)*

## DIRECTOR'S CONTACT DETAILS:

➤ **Abdul Qadir**

*Mobile: +92-321-2435401*

*Email: [abdulqadir@startexindustry.com](mailto:abdulqadir@startexindustry.com)*

➤ **Muhammad Tufail**

*Mobile: +92-313-2781188*

*Email: [tufail@startexindustry.com](mailto:tufail@startexindustry.com)*

